

Women in Transport in Asia:

Insights into gender patterns in road safety, employment, and mobility across the Asia-Pacific region

**PART 3:
MOBILITY & SECURITY**

[READ MORE](#)





Women's travel patterns often differ from men's.



Across Asia, women often take on **primary caregiving roles in their families and homes.**

This shapes their travel patterns.



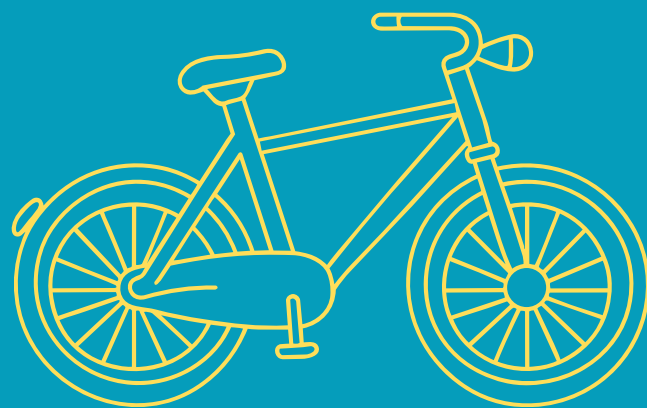
Women's trips are more likely to involve:

- Travelling with dependents
- Multiple intermediate stops during a trip
- Flexible work arrangements
- Employment closer to home

Across Asia, women are more likely to rely on:



walking



**non-motorized
transport**



**public
transport**

Evidence from a limited number of Asian countries indicates that there is a substantial gender gap in driving license ownership, with women significantly less likely than men to hold licenses.

Harassment in public transport remains widespread.

Evidence from several studies across Asia indicates that **many women** — often between one-quarter and two-thirds of commuters — **experience harassment, violence, or other safety risks when using public transport systems.**

**Yet transport policies
rarely address gender-based violence.**

**In the region,
only a small number of national policies*
address safety from gender-based violence
and harassment in transport.**

*** national transport, mobility, climate, and gender policy documents from selected Asian and Pacific countries, reviewed and analyzed by the Asian Transport Observatory**

Women rely heavily on walking and cycling in Asia,
but **unsafe infrastructure puts them at risk.**

86% of roads surveyed by iRAP lack sidewalks,
and **71%** lack proper cycle lanes.

Most also have no safe crossings or street lighting.



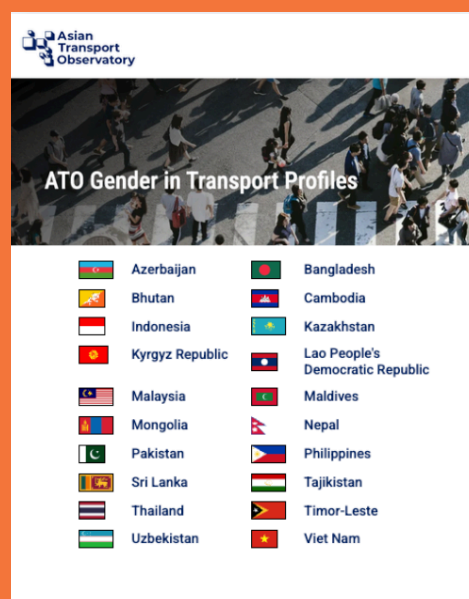
This danger is part of a wider global pattern.

**Globally,
women face a higher risk
of being seriously injured as pedestrians
and face higher risks as vehicle passengers
than men.**

Source: YOURS - Policy Brief SDG #5 Gender Equality
and Safe and Secure Mobility

Transport systems must reflect women's mobility patterns and address risks to their safety and security.

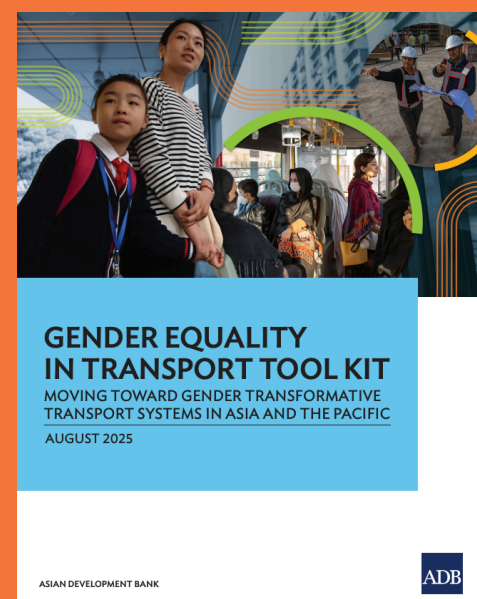
Available resources and tools:



Gender in Transport Profiles

Asian Transport Observatory

bit.ly/GenderInTransportProfiles



Gender Equality in Transport Toolkit

Asian Development Bank

bit.ly/GenderEqualityTransportToolkit