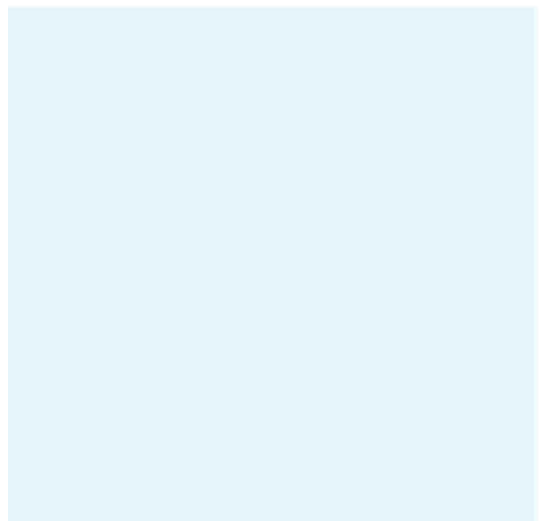
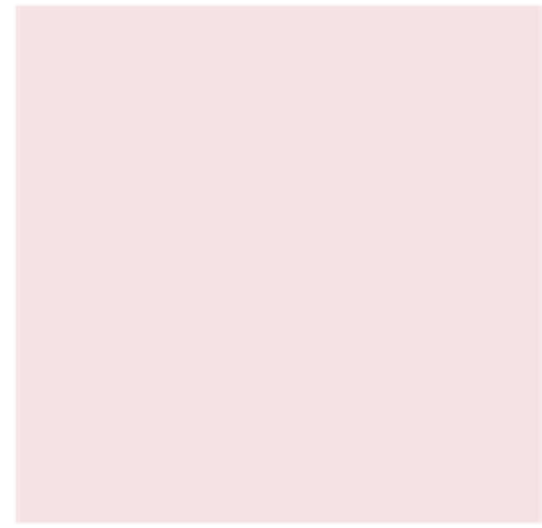
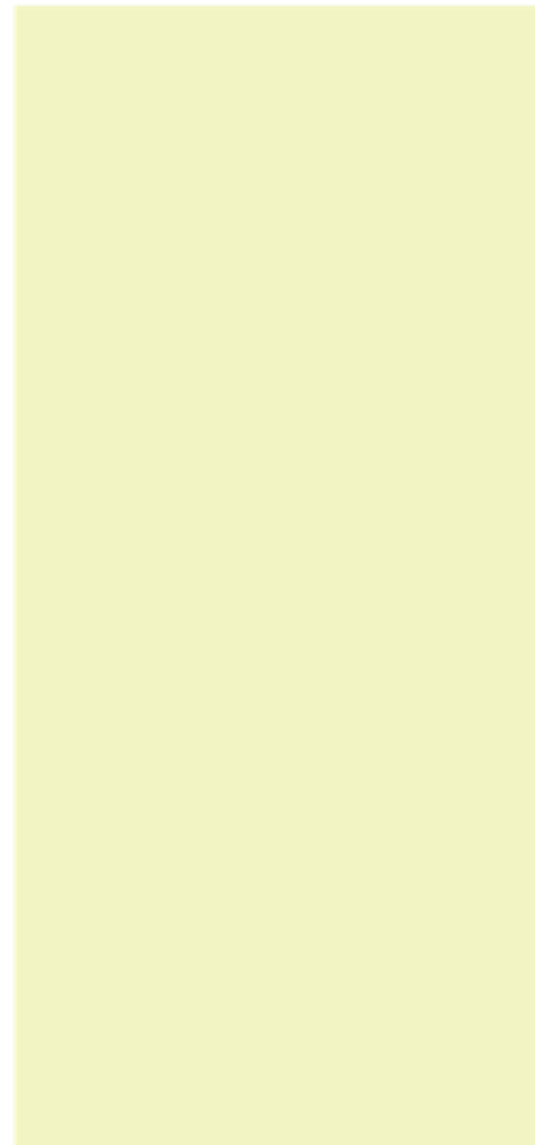
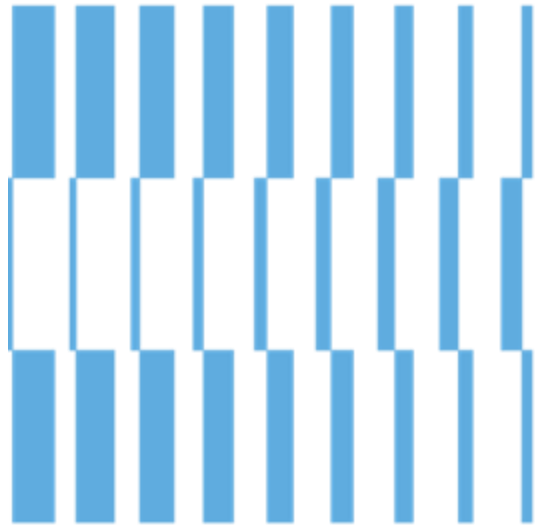




Youth Engagement App – YEA



Presented by:
Phong Le | Country Manager | AIP Foundation

What is Youth Engagement App – YEA?

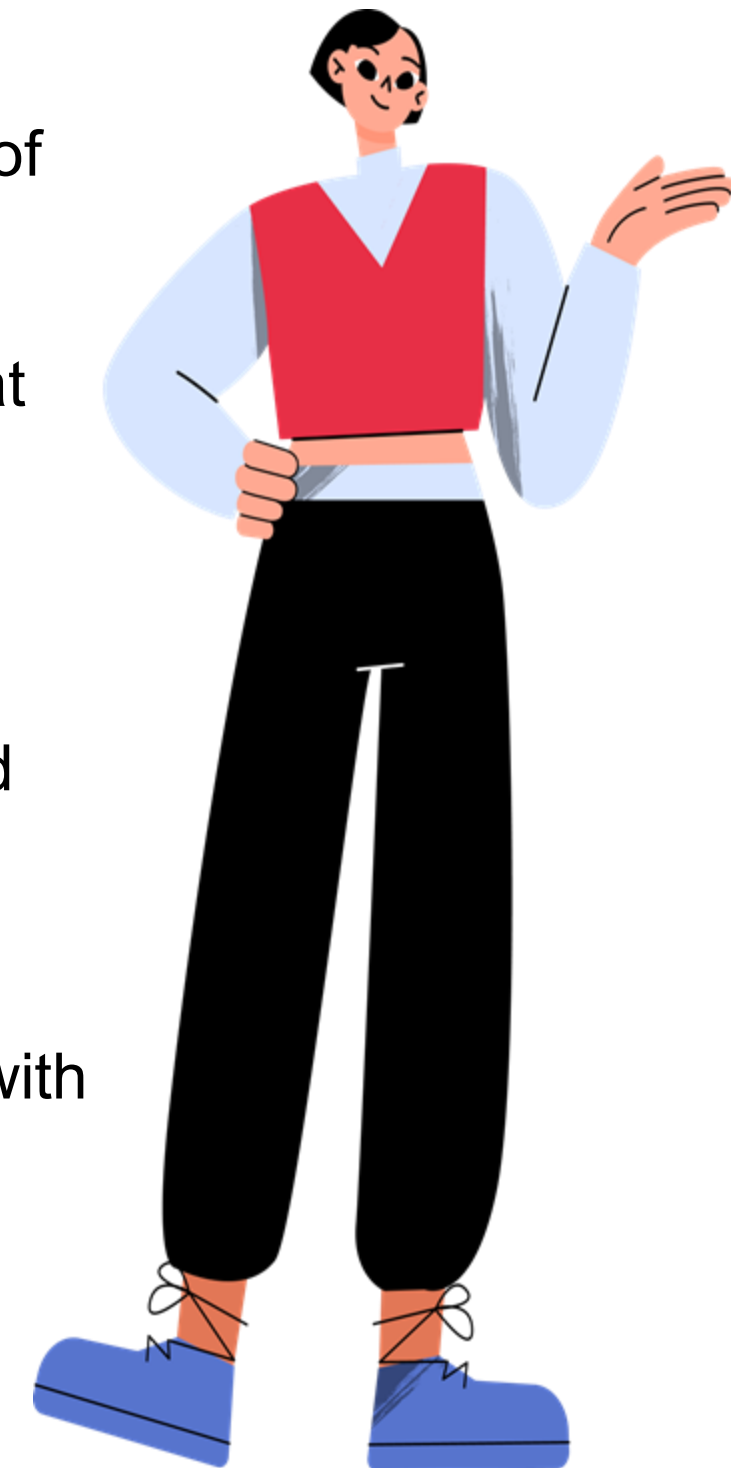


Technological solution to collect students' perceptions of road safety.

Mobile application that can be used when traveling or at school/home.

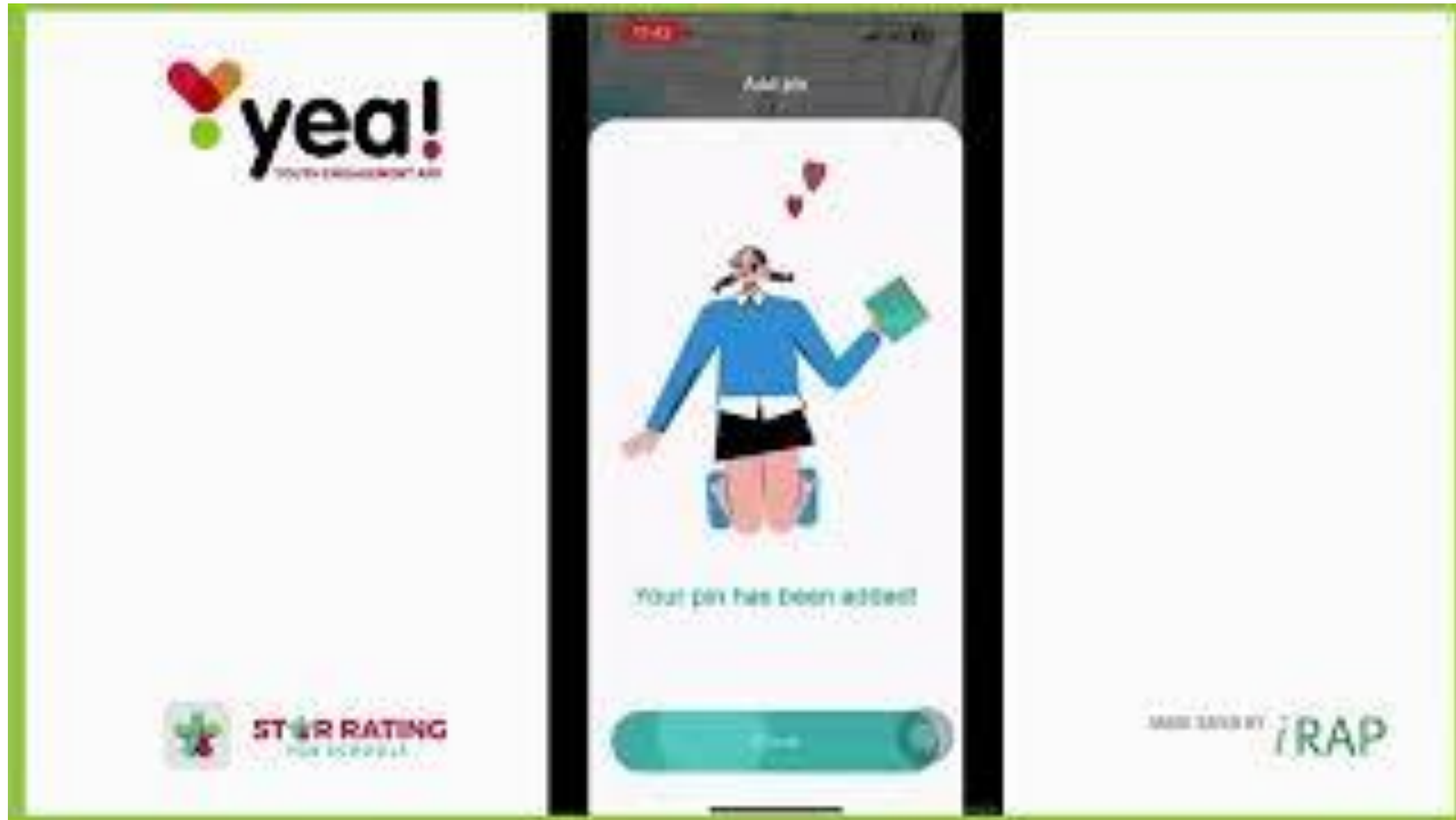
Development Objectives:

- Enable young people to communicate their fears and recommendations to those who can address them.
- Record points where they feel unsafe on the roads, making road safety a common/casual conversation with their peers.



Youth Engagement App – YEA

<https://www.youtube.com/watch?v=AwiO67tEccY>



Which locations should we assess?



Engage with the school and local community.

Identify locations with high pedestrian activity and main routes used by pedestrians.

Identify road sections with high potential risk for pedestrians.

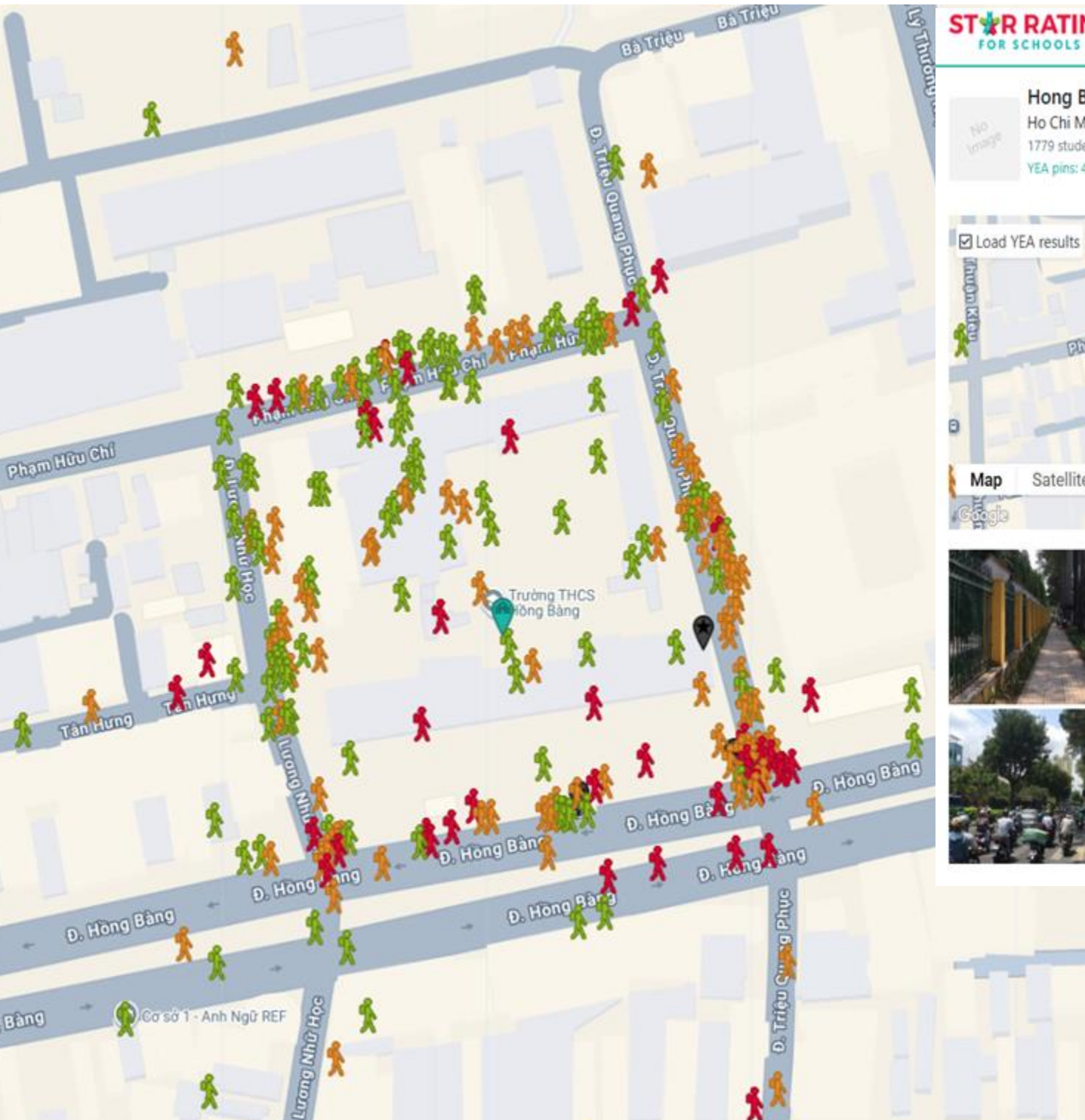


YEA x SR4S



YEA x SR4S

- Focus on unsafe and very unsafe locations.
- Focus on clusters of pins (large group of pins concentrated in one place)



STARS RATING FOR SCHOOLS Major Donor: FIA FOUNDATION

Hong Bang secondary school - HCMC - District 5
Ho Chi Minh City, District 5, Viet Nam
1779 students, 0 published locations
YEA pins: 410 ● 50.24% ● 35.37% ● 14.39%

Locations Road Upgrades

Load YEA results

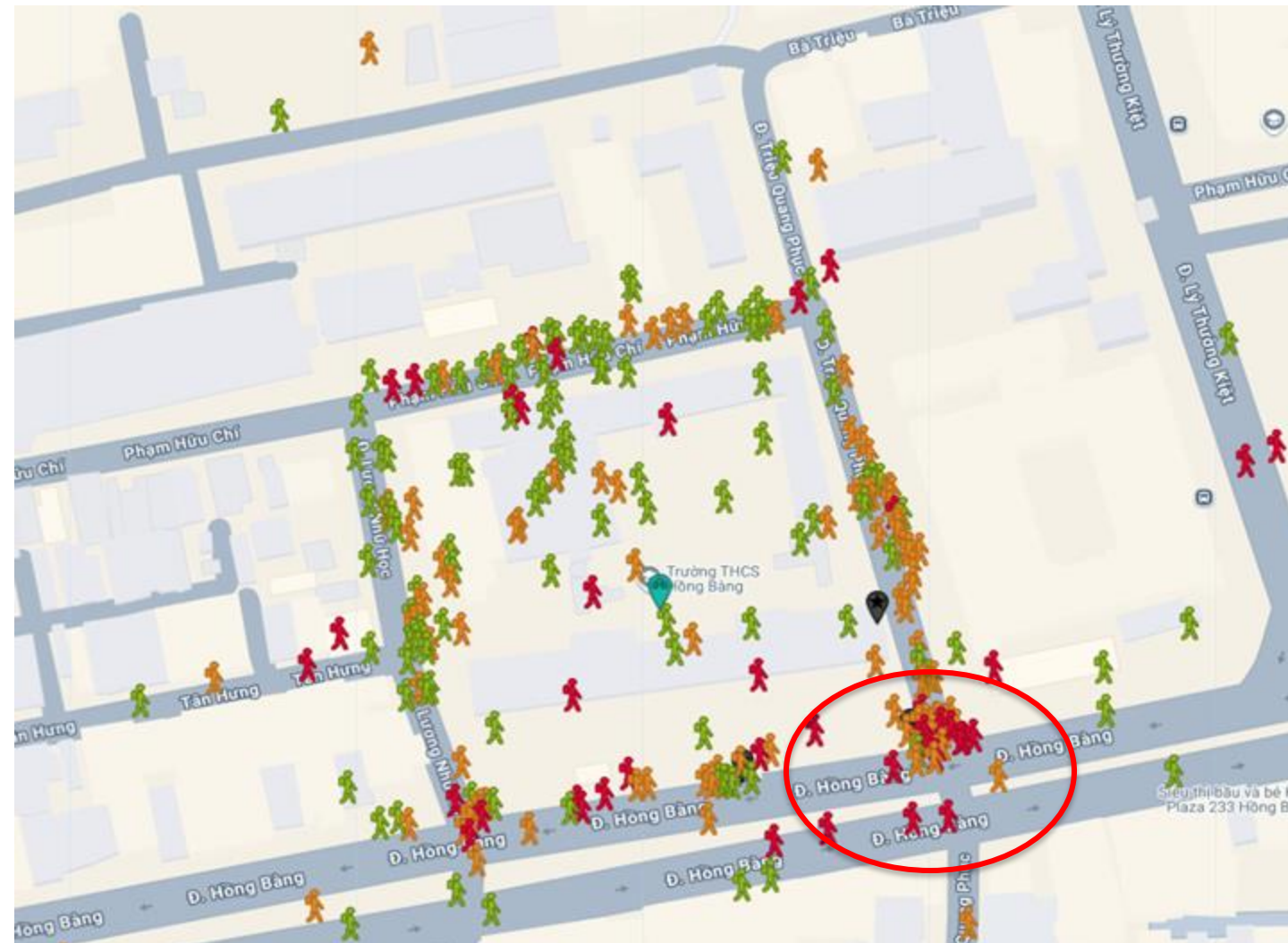
Hong Bang > Main Gate
☆☆☆☆☆
Survey: Hong Bang secondary school - District 5 - HCMC - Pre-assessment
Last modified: Aug 16, 2023 Star Rated

Trieu Quang Phuc > Side Gate
☆☆☆☆☆
Survey: Hong Bang secondary school - District 5 - HCMC - Pre-assessment
Last modified: Aug 16, 2023 Star Rated

Trieu Quang Phuc > 4-leg intersection
☆☆☆☆☆
Survey: Hong Bang secondary school - District 5 - HCMC - Pre-assessment
Last modified: Aug 16, 2023 Star Rated

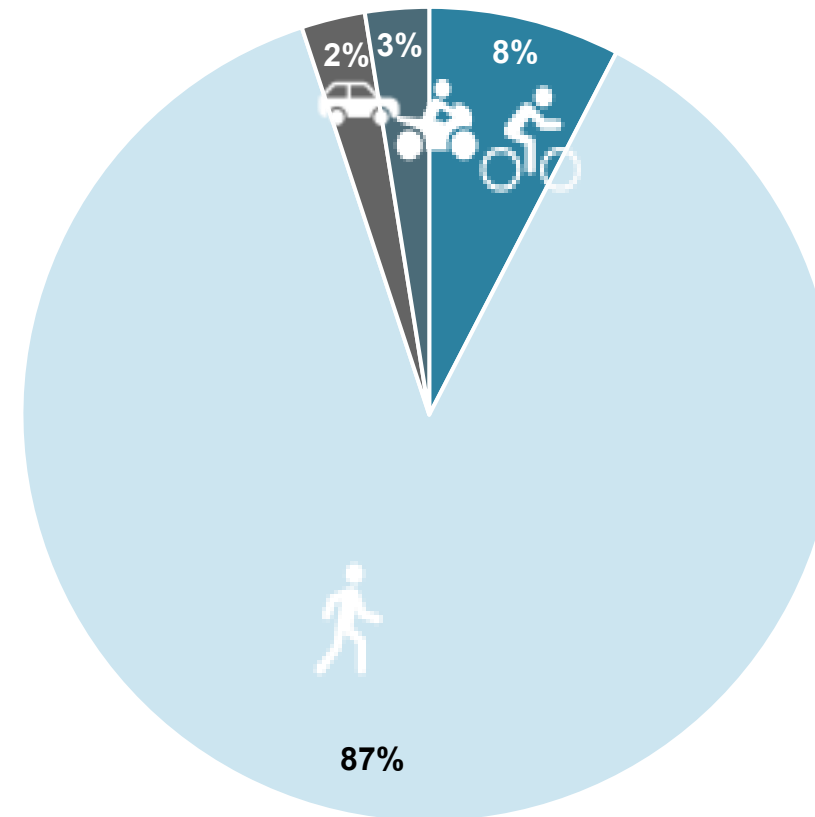
- Safe
- Unsafe
- Very unsafe

YEA x SR4S



Example: Intersection Hồng Bàng – Triệu Quang Phục, HCMC, Vietnam
79 pins → **22 unsafe pins** and **57 very unsafe pins**

Transport modes



67 pins indicates the students feel unsafe or very unsafe because it is **difficult or very difficult to cross the street**.

The intense traffic and the absence of pedestrians signals might be contributing to students feel unsafe crossing the street.



45000

Vehicles / Day

POOR

Intersection Quality



Decimal Star Ratings: 1.0

How can YEA pins support road safety initiatives?

- Identifying locations to conduct detailed road safety assessment;
- Prioritizing locations for infrastructure interventions;
- Prioritizing locations for enforcement activities;
- Contribute to measuring the impact of interventions (before–after) and to evidence-based communication on the effectiveness of the interventions.





Thank You!

Phong Le

COUNTRY MANAGER

Mobile: +84 98 997 3689

Phong.le@aip-foundation.org

